

2PX Series

Electrical Connector

2PM, 2PMД small circular electrical connector, used for circuit connections in electrical and radio devices, the plug and socket are connected through threaded connection nuts. 2PMГ, 2PMДГ is a sealed type, and 2PMГП, 2PMГПД is a sealed through wall type.

Localized model: 2PX

(The unified model of 2PM and 2PMД series is 2PX, and the combination code is unified)

Technical performance

- Environmental temperature: -60 °C~+150°C; -60°C~+200°C (Sealed)
- Vibration acceleration: 10-5000Hz
500g
- Impact acceleration: 500g (once);
100g (multiple times)
- Working voltage: :
- Contact current:
- Contact resistance:
- Insulation resistance:
≥1000MΩ(normal),
≥20MΩ(dampness-heat)
- Mechanical and working life: 500 times of plugging and unplugging
- Technical specification: Q/3E
20006-200

Ø1.0	Ø1.5	Ø2.0	Ø3.0
5A	10A	20A	40A
Ø1.0	Ø1.5	Ø2.0	Ø3.0
≤5mΩ	≤2.5mΩ	≤1.6mΩ	≤0.8mΩ

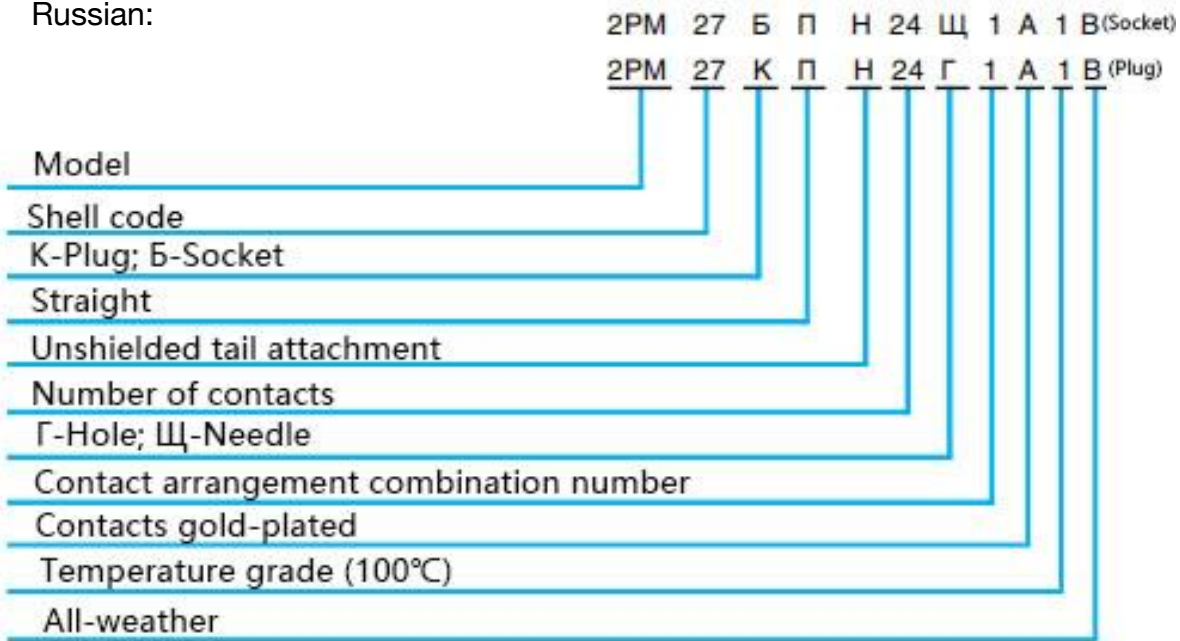
Code Instruction

	Meaning of code	Russian code	
1	Model Unsealed Unsealed heat-resistant T Sealed(Г) Sealed through wall(П)	2PM, 2PMД 2PMT, 2PMДТ 2PMГ, 2PMГД 2PMГП, 2PMГПД	
2	Shell standard size (mm)	14/18/22/24/27/30/33/36/39/42/45	
3	Connector composition: Socket Plug	Б (fixed end) К (free end)	
4	Tail attachment: Straight/Angled	П(straight)/У(Angled)	No tail attachments not marked
5	Tail attachment: Shielded/Unshielded	Э(shielded)/Н(unshielded)	
6	Number of contacts	4/7/8/10/19/20/22/24/30/32/42/45/50	
7	Contact category: Needle/Hole	Ц(Needle) / Г(Hole)	
8	Contact arrangement combination number 1-9	1-both Φ1 2- Φ1+ Φ1.5 3- Φ2+ Φ3 4- Φ1+ Φ3 5-both Φ1.5 6- Φ1.5+ Φ3 7- Φ1.5+ Φ2+ Φ3 8- Φ1.5+ Φ2 9-both Φ3	

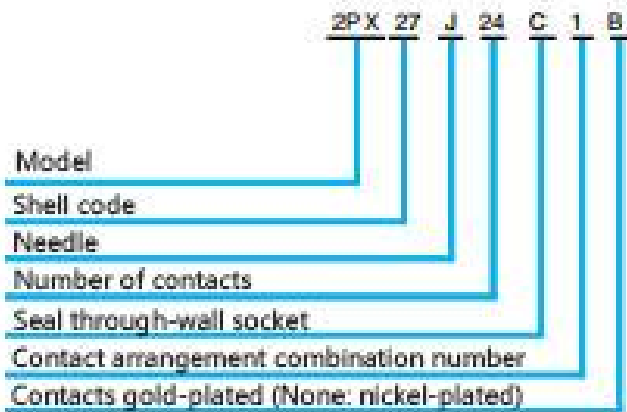


	Meaning of code	Russian code
9	Plating of contact parts with gold, silver, and nickel	A(Gold); B(Silver); E(Nickel)
10	Temperature grade: 100°C, 200°C	1(100°C); 2(200°C)
1	All weather	D
	Meaning of code	Chinese code
1	Model Unsealed Sealed(Γ) Sealed through wall(Π)	2PX 2PX-M 2PX-C
2	Shell standard size (mm)	14/18/22/24/27/30/33/36/39/42/45
3	Contact category: Needle/Hole	J (Needle) / K (Hole)
4	Number of contacts	4/7/8/10/19/20/22/24/30/32/42/45/50
5	Connector composition: Plug Unsealed Socket Sealed Socket (through wall)	None A M (C)
6	Tail attachment: Straight Shielded (Unshielded) Angled Shielded (Unshielded)	P (Q) R (S)
7	Contact arrangement combination number 1-9	1-both Φ1 2- Φ1+ Φ1.5 3- Φ2+ Φ3 4- Φ1+ Φ3 5-both Φ1.5 6- Φ1.5+ Φ3 7- Φ1.5+ Φ2+ Φ3 8- Φ1.5+ Φ2 9-both Φ3
8	Plating of contact parts	B (Gold); None (Silver) Note: M/ Hermetically sealed, nickel-plated; C/Through wall, nickel-plated
9	Left plug	U

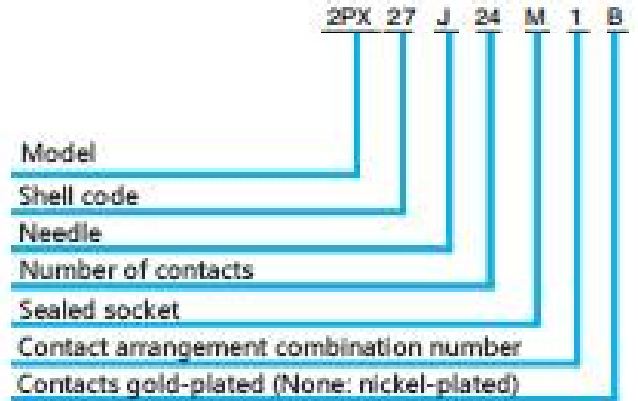
Russian:



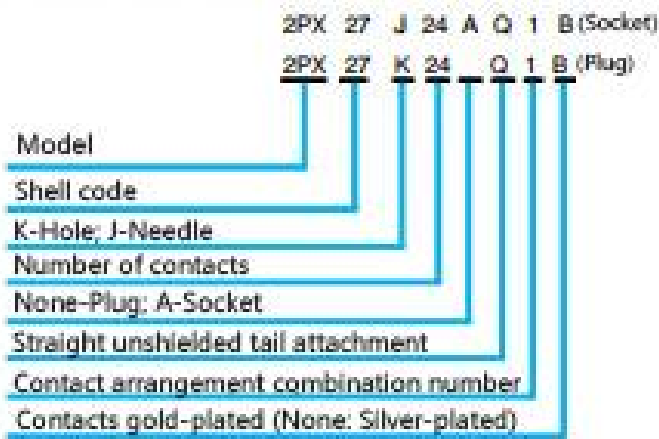
Chinese:



Sealed through wall socket



Sealed socket

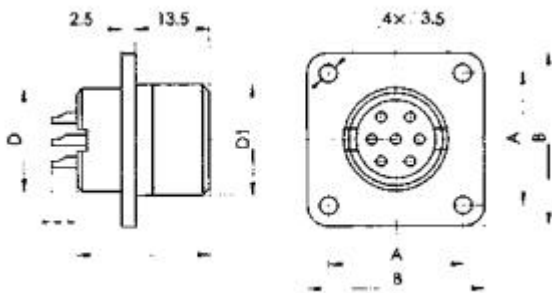


Non-sealed plug socket

Insulator hole group arrangement (from the aspect of hole insulator mating surface)

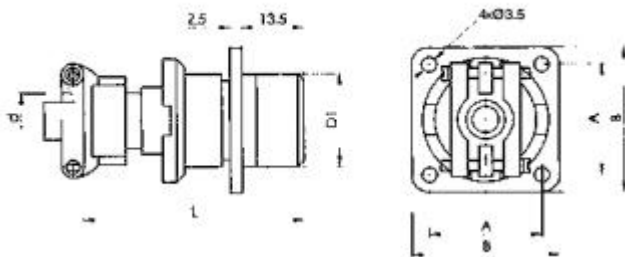
Arrangement combination number Shell code	14/4/1 (Shell code/Number of contacts/Arrangement combination number)				Contact Diameter		
					$\varnothing 1$ $\varnothing 1.5$ $\varnothing 2$ $\varnothing 3$ 		
14							
	18/7/1	18/4/5			22/4/3	22/10/1	
18			22				
	24/10/5	24/19/1					
24							
	27/7/5	27/7/2	27/19/5	27/24/1			
27							
	30/8/7	30/24/5	30/32/1				
30							
	33/7/9	33/20/4	33/20/1	33/32/5			
33							
	36/22/1	36/20/2	36/20/6	36/20/5			
36							
	39/22/5	39/45/2					
39							
	42/30/2	42/45/5	42/50/2		45/50/8		
42				45			

Socket without tail attachment (Б)



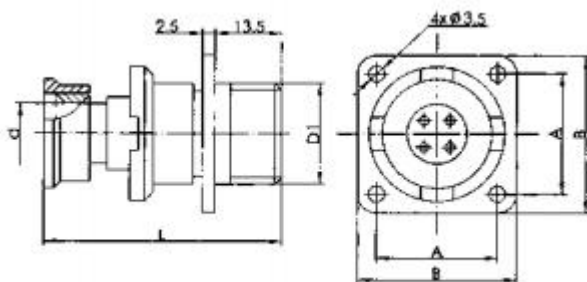
Size (mm)					
Shell code	D (Left)	D ₁	A	B	B
14	M14x1	M16x1	17±0.1	24	24
18	M18x1	M20x1	20±0.1	27	
22	M22x1	M24x1	23±0.1	30	
24	M24x1	M27x1.5	26±0.1	33	
27	M27x1	M30x1.5	29±0.1	36	
30	M30x1	M33x1.5	31±0.1	38	
33	M33x1	M36x1.5	32±0.1	40	
36	M36x1	M39x1.5	35±0.1	43	
39	M39x1	M42x1.5	37±0.1	46	
42	M42x1	M45x1.5	40±0.1	49	
45	M45x1	M48x1.5	43±0.1	52	26

Socket with straight unshielded tail attachment (БПН)



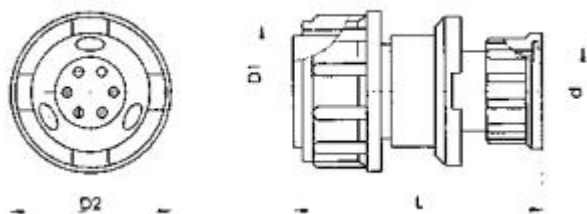
Size (mm)					
Shell code	D1	d	A	B	L
14	M16x1	6.5	17±0.1	24	54
18	M20x1	10.5	20±0.1	27	54
22	M24x1	14.5	23±0.1	30	57
24	M27x1.5	16.5	26±0.1	33	62.5
27	M30x1.5	18.5	29±0.1	36	62.5
30	M33x1.5	20.5	31±0.1	38	62.5
33	M36x1.5	22.5	32±0.1	40	67.5
36	M39x1.5	22.5	35±0.1	43	67.5
39	M42x1.5	24.5	37±0.1	46	67.5
42	M45x1.5	30.5	40±0.1	49	67.5
45	M48x1.5	30.5	43±0.1	52	67.5

Socket with straight shielded tail attachment (БПШ)



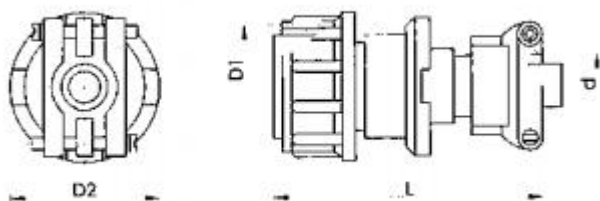
Size (mm)					
Shell code	D1	d	A	B	L
14	M16x1	6.5	17±0.1	24	48
18	M20x1	10.5	20±0.1	27	48
22	M24x1	14	23±0.1	30	48
24	M27x1.5	16.5	26±0.1	33	54
27	M30x1.5	18	29±0.1	36	54
30	M33x1.5	20.5	31±0.1	38	54
33	M36x1.5	23.7	32±0.1	40	59
36	M39x1.5	22.5	35±0.1	43	59
39	M42x1.5	25	37±0.1	46	59
42	M45x1.5	29.5	40±0.1	49	59
45	M48x1.5	29.5	43±0.1	52	59

Plug with straight shielded tail attachment (КПЭ)



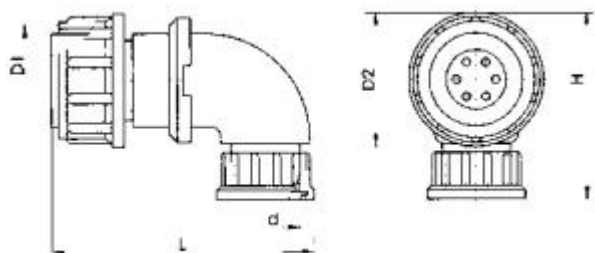
Size (mm)				
Shell code	D1	D2	d	L
14	M16x1	22	6.5	48
18	M20x1	25	10.5	48
22	M24x1	29	14	48
24	M27x1.5	32	16.5	54
27	M30x1.5	35	18	54
30	M33x1.5	39	20.5	54
33	M36x1.5	42	23.7	59
36	M39x1.5	45	22.5	59
39	M42x1.5	48.5	25	59
42	M45x1.5	51	29.5	59
45	M48x1.5	54	29.5	59

Plug with straight unshielded tail attachment (КПН)



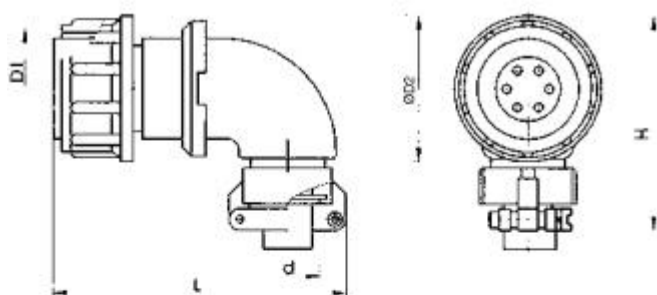
Size (mm)				
Shell code	D1	D2	d	L
14	M16x1	22	6.5	54
18	M20x1	25	10.5	54
22	M24x1	29	14.5	57
24	M27x1.5	32	16.5	62.5
27	M30x1.5	35	18.5	62.5
30	M33x1.5	39	20.5	62.5
33	M36x1.5	42	22.5	67.5
36	M39x1.5	45	22.5	67.5
39	M42x1.5	48.5	24.5	67.5
42	M45x1.5	51	30.5	67.5
45	M48x1.5	54	30.5	67.5

Plug with curved shielded tail attachment (КУЭ)



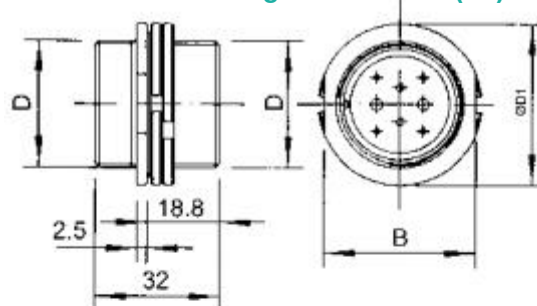
Size (mm)					
Shell code	D1	D2	d	H	L
14	M16x1	22	6.5	30.8	48
18	M20x1	25	10.5	35	51
22	M24x1	29	14	38	54
24	M27x1.5	32	16.5	41	57
27	M30x1.5	35	18	44	59
30	M33x1.5	39	20.5	47.8	62
33	M36x1.5	42	23.7	50.8	65
36	M39x1.5	45	22.5	53.8	72
39	M42x1.5	48.5	25	56	72
42	M45x1.5	51	29.5	60	72

Plug with curved unshielded tail attachment (KYH)



Size (mm)					
Shell code	D1	D2	d	H	L
14	M16x1	22	6.5	40	51
18	M20x1	25	10.5	41	54
22	M24x1	29	14.5	47	59
24	M27x1.5	32	16.5	50	60
27	M30x1.5	35	18.5	53	64
30	M33x1.5	39	20.5	57	65
33	M36x1.5	42	22.5	60	69
36	M39x1.5	45	22.5	63	74
39	M42x1.5	48.5	24.5	66	73
42	M45x1.5	51	30.5	69	76

Shielded through wall socket (ГП)



Size (mm)			
Shell code	D	D1	B
14	M16x1	25	22
18	M20x1	29	26
22	M24x1	33	30
24	M27x1.5	36	33
27	M30x1.5	39	36
30	M33x1.5	42	39
33	M36x1.5	45	42
36	M39x1.5	48	45
39	M42x1.5	51	48
42	M45x1.5	54	51

List of arrangement and combination codes of contact pieces

Shell code	Contact combination code	Total number of contacts	Contact diameter (mm) and quantity			
			Ø1.0	Ø1.5	Ø2.0	Ø3.0
14	1	4	4			
18	1	7	7			
	5	4		4		
22	1	10	10			
	3	4			2	2
24	1	19	19			
	5	10		10		
27	1	24	24			
	2	7	5	2		
	5	7		7		
	5	19		19		
30	1	32	32			
	5	24		24		
	7	8		4	2	2

Shell code	Contact combination code	Total number of contacts	Contact diameter (mm) and quantity			
			Ø1.0	Ø1.5	Ø2.0	Ø3.0
33	1	20	20			
	4	20	18			2
	5	32		32		
	9	7				7
36	1	22	22			
	2	20	16	4		
	5	20		20		
	6	20		18		2
39	2	45	40	5		
	5	22		22		
42	2	30	15	15		
	2	50	43	7		
	5	45		45		
45	8	50		35	15	